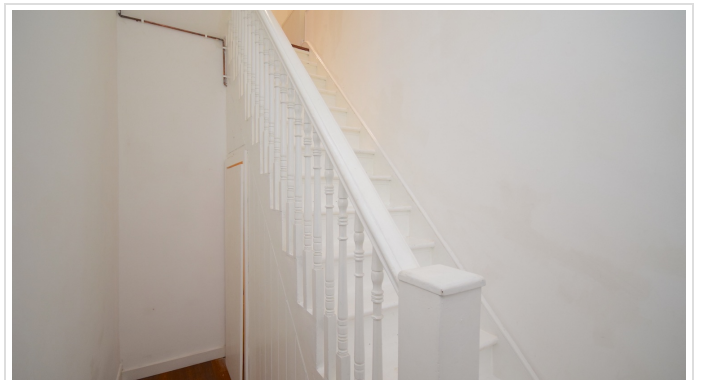


3 Bed Terraced In Woolwich Road , Greenwich, SE10 0JU

£2,450 Monthly





SHORT DESCRIPTION

Property Ref: 9812 Beautifully presented, newly refurbished three-bedroom house with new loft extension, lovely garden and three-bathrooms (two Ensuite). Situated in a popular residential area next to Greenwich pleasure park (one of Greenwich's green flag award-winning sites with a Café, children's playground) and within catchment of the ever-popular Halstow Primary School. The accommodation is bright, well-proportioned three bedrooms with Wren designed kitchen with worktop/seating area for breakfast/dining, reception, feature fireplace and bi-fold doors on to a peaceful rear garden. The house has gorgeous period characteristics, ample storage. The property will suit anyone looking for a family home or working professionals with great connectivity to Canary Wharf, City of London etc. which are only 15 minutes away. This is a larger than normal 3-bedroom house with high floor to ceiling, new windows, and doors throughout the property. It has been refurbished to an extremely high standard. Viewers will appreciate the clever design and little features such as studio flat type design of loft extension, French doors opening to the bright outside area of garden. Solid wood floors throughout the property. Nursery and outstanding schools are in catchment. Walkable to Greenwich Park, Cutty sark, Westcombe Park Station with direct line to London Bridge, Cannon Street within minutes, IKEA, Sainsbury's superstore, M&S etc. and close to the O2 for shopping, restaurants, bowling, cinema, and North Greenwich station for Jubilee Line. Greenwich centre facilities which include a gym, GP, library, swimming pool and other amenities on the Greenwich Peninsular are nearby.

3

Bed Room(s)

3

Bath Room(s)

1

Living Room(s)

FLOOR PLAN

Illustrations are for identification purposes only and are not to scale.
All measurements are a maximum and include wardrobes and bay windows where applicable.



EPC GRAPH

Illustrations are for identification purposes only and are not to scale.
All measurements are a maximum and include wardrobes and bay windows where applicable.

Disclaimer: The information displayed about this property comprises a property advertisement. 99home.co.uk (/) will not make no warranty for the accuracy or completeness of the advertisement or any linked or associated information, and 99home has no control over the content. This property advertisement does not constitute property particulars, the property may offer to tenants in same condition as they have seen on time of the viewing. The information is provided and maintained by 99home.co.uk (/)

Company registration number in England : 10469887 VAT: 263 3023 36
Copyright © 99Home Limited 2017. All rights reserved.