

4 Bed Flat In Great North Road , Gosforth, NE3 2DQ

£1,200 Monthly





SHORT DESCRIPTION

Property Ref: 14827 Beautiful & Spacious 4-Bedroom Maisonette in the Heart of Gosforth - Great North Road Welcome to this stunning and exceptionally spacious 4-bedroom maisonette, ideally located in the heart of Gosforth on the prestigious Great North Road. This lovely home offers a perfect blend of comfort, space, and convenience, making it ideal for families or professionals looking for generous living in a sought-after location. Spread over two levels, the property features a welcoming first-floor entrance with a wide, open landing. From here, you'll find two large, fully furnished bedrooms—each with beds and cabinets already in place. One of these bedrooms opens directly onto a spacious outdoor terrace, ideal for relaxing or enjoying fresh air in your own private outdoor space. The living room is bright and airy, with a large window that brings in lots of natural light. It's a fantastic size, comfortably fitting sofas, cabinets, and more. The modern bathroom on this floor includes a bathtub, and there's also a separate utility room equipped for washing and drying clothes. From the landing, a staircase leads both upstairs and downstairs. On the ground level, there is access to an additional private outdoor space that includes a secure shed—perfect for bikes and storage—as well as bin access and a second entrance gate from the back for added convenience. Upstairs, the top landing opens into two further large bedrooms, again furnished with beds and cabinets. One of the rooms includes built-in wardrobes, and the spacious master bedroom benefits from its own private toilet. This home is impressively spacious throughout, filled with natural light and designed for practical, comfortable living. The total living area measures approximately 117 square meters. Located close to shops, public transport, schools (including Gosforth Academy), and local amenities, this property truly ticks all the boxes. Ground Floor: Living Room: 4.555 m x 3.820 m Bedroom 1: 6.500 m x 3.009 m Bedroom 2: 3.320 m x 3.321 m Kitchen: 5.555 m x 2.461 m Utility Room: 2.594 m x 1.480 m Bathroom: 2.750 m x 1.486 m Landing (Downstairs): 2.893 m x 1.841 m First Floor: Bedroom 1: 3.112 m x 3.076 m Bedroom 2: 5.130 m x 3.664 m Landing (Upstairs): 3.127 m x 1.878 m Property Type: Flat Full Renting price: £1200.00 Pricing Options: Guide Price Tenure: 12 months Council tax band: A EPC rating: D Measurement:1259 sq.ft. Outside Space: Terrace, Patio Parking: Allocated, Private Heating Type: Gas Central Heating -----

4

Bed Room(s)

1

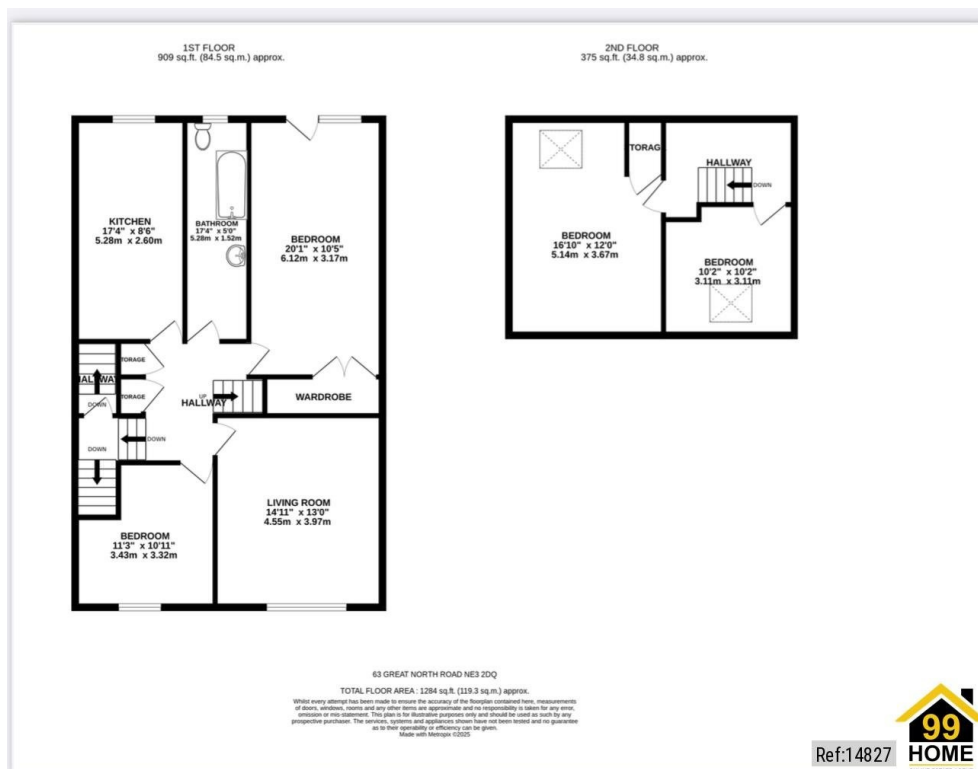
Bath Room(s)

1

Living Room(s)

FLOOR PLAN

Illustrations are for identification purposes only and are not to scale.
All measurements are a maximum and include wardrobes and bay windows where applicable.



EPC GRAPH

Illustrations are for identification purposes only and are not to scale.
All measurements are a maximum and include wardrobes and bay windows where applicable.

Score	Energy rating	Current	Potential
92+	A		
81-91	B		
69-80	C		70 C
55-68	D	58 D	
39-54	E		
21-38	F		
1-20	G		

Disclaimer: The information displayed about this property comprises a property advertisement. 99home.co.uk (/) will not make no warranty for the accuracy or completeness of the advertisement or any linked or associated information, and 99home has no control over the content. This property advertisement does not constitute property particulars, the property may offer to tenants in same condition as they have seen on time of the viewing. The information is provided and maintained by 99home.co.uk (/)

