

1 Bed Flat In 4 St James Crescent , London, SW9 7BY

£2,400 Monthly





SHORT DESCRIPTION

Property Ref: 14750 Key features • Fully Equipped Kitchen (with microwave, kettle, toaster, ceramic hob, fridge freezer) • All bills included (Council tax, Water, Electric, WIFI) • Stylish 1 bedroom apartment on the 5th floor • Set within a modern and secure building • Gorgeous reception room with space to dine and relax • Smart open-plan kitchen with fitted appliances • Bright double bedroom with balcony access • Envious location only a stone throw from the main attractions of Brixton Description *Short-term let*. Furnished apartment available from 3 to 6 months. All bills included. Set within a new development with secure entrance and lift access, this fantastic 1 bedroom apartment is on the 5th floor and boasts a bright open plan kitchen and a lovely private balcony access through the bedroom. All bills are included and the apartment is fully furnished. The property is set within close proximity to the huge range of shops and amenities of Brixton Road, including Brixton Market, Brixton Village, Ritzy Cinema, Brixton Station and Underground as well as the green open spaces of Brockwell Park. Amenities: 1 x Queen Bed 1 x En-suite Bathroom with Shower Dining Table & Chairs Fully Equipped Kitchen (with microwave, kettle, toaster, hob, oven & fridge freezer) 43" Smart TV (To be confirmed) Laundry Dog friendly Other: Free Wifi Digital Access Key Hairdryer Iron, Ironing Board & Airing Rack Shampoo/Conditioner Fresh Linen & Towels Tea, Coffee, Milk & Sugar 24 Hour Emergency Service Additional Service at extra cost offered: Cleaning service Property Type: Flat Full Renting price: £2400.00 Pricing Options: Fixed Price Tenure: 3 months Council tax band: H EPC rating: B Measurement: 548.959 sq.ft. Outside Space: Communal Garden Parking: On street Heating Type: Solar Water -----

1

Bed Room(s)

1

Bath Room(s)

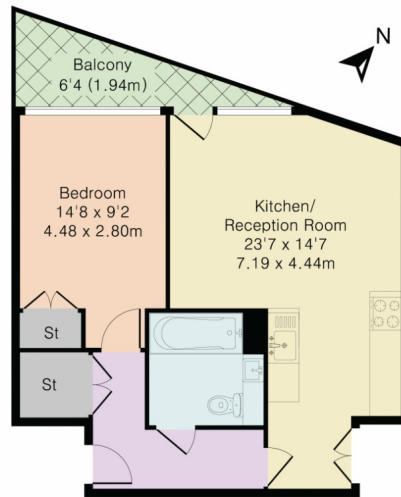
1

Living Room(s)

FLOOR PLAN

Illustrations are for identification purposes only and are not to scale.
All measurements are a maximum and include wardrobes and bay windows where applicable.

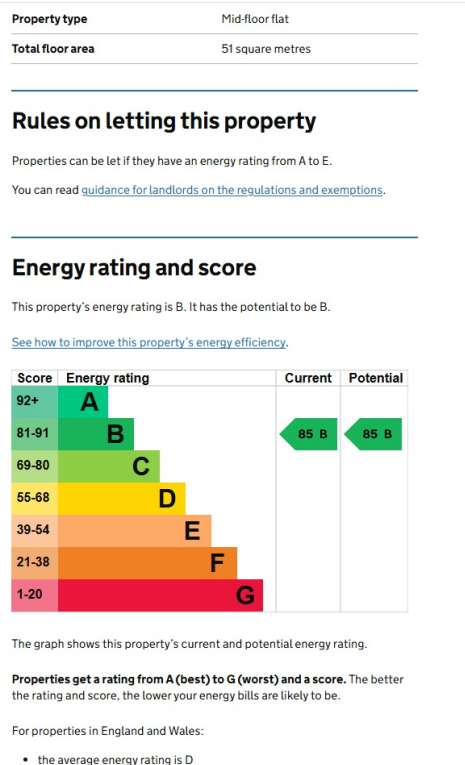
Approximate Gross Internal Area 526 sq ft – 49 sq m



Fifth Floor

EPC GRAPH

Illustrations are for identification purposes only and are not to scale.
All measurements are a maximum and include wardrobes and bay windows where applicable.



Disclaimer: The information displayed about this property comprises a property advertisement. 99home.co.uk (/) will not make no warranty for the accuracy or completeness of the advertisement or any linked or associated information, and 99home has no control over the content. This property advertisement does not constitute property particulars, the property may offer to tenants in same condition as they have seen on time of the viewing. The information is provided and maintained by 99home.co.uk (/)

