



99Home Ltd.

99Home Ltd,
Sutton Business Centre,
Restmor Way,
Wallington,
SM6 7AH,
Phone :0203 5000 999
Email
:info@99home.co.uk

3 Bed Semi-Detached In Northway Sedgley, Wolverhampton, DY3 3PS

£1,250 Monthly



Ref:14746



Ref:14746





SHORT DESCRIPTION

Property Ref: 14746 We are pleased to present an exceptional located at 56 Northway Sedgley. This wonderful residence boasts 3 bedrooms, 1 bathroom, and 1 large living room, offering ample space for comfortable living. Additionally, it features a fully-fitted kitchen along with the convenience driveway parking. Positioned in a prime location, this property offers easy access to a range of local amenities and public transportation, ensuring convenience for residents. Its proximity to schools enhances its appeal. This residence embodies the perfect blend of comfort, convenience, and quality living, making it an ideal choice for discerning individuals or families seeking a place to call home. Available to rent at £1250 per calendar month. Entrance porch Reception hallway cloak cupboard Through lounge diner 24'5 into bay x 11'3 Breakfast Kitchen 11'5 x 11'2 Rear hallway Guest WC 3'9 x 2'8 First floor landing Bedroom 13'8 into bay x 11'3 max with range of built in ward robes & shelving Bedroom 11'3 max x 11'0 with range of fitted wardrobes Bedroom 15'3 max (limited headroom) x 12'4 max Shower room 9'0 x 7'0 Outside Garage 18'0 x 8'1 max Enclosed rear garden Driveway & garden to fore Property Type: Semi-detached Full renting price: £1250.00 Pricing Options: Fixed Price Tenure: 12 months Council tax band: C EPC rating: E Measurement: 1270.141 sq.ft. Outside Space: Front Garden, Rear Garden, Patio Parking: Garage, Driveway Heating Type: Solar Powered, Double Glazing -----

3

Bed Room(s)

1

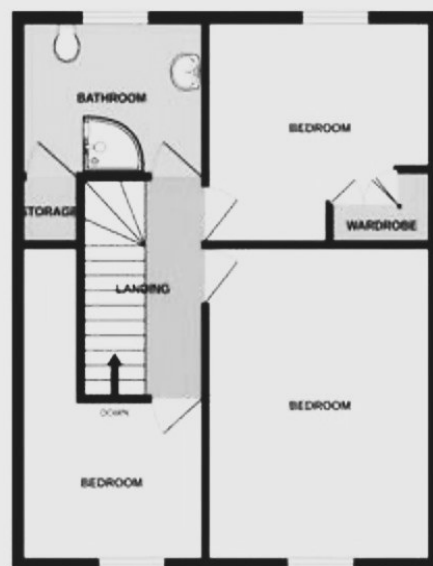
Bath Room(s)

1

Living Room(s)

FLOOR PLAN

Illustrations are for identification purposes only and are not to scale.
All measurements are a maximum and include wardrobes and bay windows where applicable.



EPC GRAPH

Illustrations are for identification purposes only and are not to scale.
All measurements are a maximum and include wardrobes and bay windows where applicable.

Energy rating and score

This property's energy rating is E. It has the potential to be C.

[See how to improve this property's energy efficiency.](#)

Score	Energy rating	Current	Potential
92+	A		
81-91	B		
69-80	C		80 C
55-68	D		
39-54	E	52 E	
21-38	F		
1-20	G		

The graph shows this property's current and potential energy rating.

Disclaimer: The information displayed about this property comprises a property advertisement. 99home.co.uk (/) will not make no warranty for the accuracy or completeness of the advertisement or any linked or associated information, and 99home has no control over the content. This property advertisement does not constitute property particulars, the property may offer to tenants in same condition as they have seen on time of the viewing. The information is provided and maintained by 99home.co.uk (/)

