

2 Bed Semi-Detached In Tetbury , Tetbury, GL8 8WD

£330,000





## SHORT DESCRIPTION

Property Ref: 14000 TWO BEDROOM SEMI DETACHED HOUSE. PRIVATE SIDE DRIVE. PRIVATE BACK GARDEN CAR CHARGER. Situated on the popular Miller Homes development in Tetbury, this property is light and airy and very well presented throughout. There is a spacious entrance hall with stairs to the first floor. A cloakroom, kitchen, and lounge/diner (with a very good-sized storage cupboard) downstairs with two double bedrooms and a family bathroom upstairs. Patio doors overlook the rear garden which has two patio areas and planters as well as lawn. The garden will include a shed. The driveway has ample parking for two cars and has an electric vehicle charger. Upstairs are two very good-sized double bedrooms. A family bathroom with a shower over the bathtub. An airing cupboard with plenty of storage and access to the loft space. The property is in a great location, walking distance to the high street and yet surrounded by some lovely country walks. A stone's throw from Kemble train station and close to nursery, primary and secondary schools...



**Bed Room(s)**



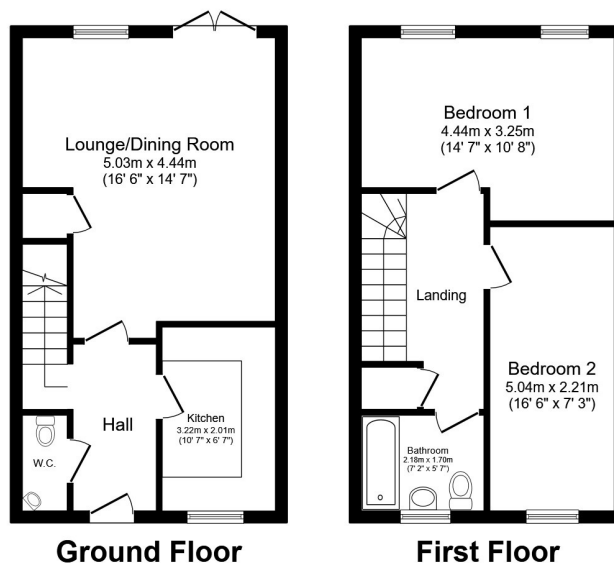
**Bath Room(s)**



**Living Room(s)**

## FLOOR PLAN

Illustrations are for identification purposes only and are not to scale. All measurements are a maximum and include wardrobes and bay windows where applicable.



Total floor area 75.3 sq.m. (811 sq.ft.) approx

This floor plan is for illustrative purposes only. It is not drawn to scale. Any measurements, floor areas (including any total floor area), openings and orientation are approximate. No details are guaranteed, they cannot be relied upon for any purpose and they do not form part of any agreement. No liability is taken for any error, omission or misstatement. A party must rely upon its own inspection(s). Powered by [www.focalagent.com](http://www.focalagent.com)

# EPC GRAPH

Illustrations are for identification purposes only and are not to scale.  
All measurements are a maximum and include wardrobes and bay windows where applicable.

Score	Energy rating	Current	Potential
92+	A		96 A
81-91	B	83 B	
69-80	C		
55-68	D		
39-54	E		
21-38	F		
1-20	G		

**Disclaimer:** The information displayed about this property comprises a property advertisement. 99home.co.uk (/) will not make no warranty for the accuracy or completeness of the advertisement or any linked or associated information, and 99home has no control over the content. This property advertisement does not constitute property particulars, the property may offer to tenants in same condition as they have seen on time of the viewing. The information is provided and maintained by 99home.co.uk (/)

Company registration number in England : 10469887 VAT: 263 3023 36  
Copyright © 99Home Limited 2017. All rights reserved.