

1 Bed Apartment In Smithfield Apartments 131 Rockingham Street, Sheffield,
S1 4EY £114,995





SHORT DESCRIPTION

Property Ref: 13856 *LUXURY 1 BEDROOM APARTMENT WITH ROOF TERRACE* We are pleased to offer this stunning 1 bedroom luxury top floor apartment comprising of a large lounge/kitchen, double bedroom and a full bathroom suite. Externally there is a feature balcony offering amazing views of the city. Located in the popular area of Central Sheffield, this property has a spacious feel and has the benefit of the following features; Great location - Central Sheffield Brand new throughout Fully furnished to an extremely high standard including TV bed and custom sofa 2 x Smart TVs ready to go with our inclusive high speed Broadband Large roof terrace This property is a must see and an internal viewing is highly recommended. With amenities such as Heating, Double Glazing and being Internet ready this property won't be on the market for long. Tenant in situ paying £825 per month. Property Type: Apartment Full selling price: £114995.00 Pricing Options: Fixed Price Tenure: Leasehold Remaining lease (In Year): 132 Yearly Ground Rent Cost: £150.00 Yearly Management Cost: £2500.00 Council tax band: A EPC rating: C Measurement: 420 sq. ft. Outside Space: Terrace Parking: Allocated - car parking available at a cost of £75 per month, Allocated parking in underground secure carpark. Heating Type: Electric Heating Chain Sale or Chain Free: Chain Free Possession of the property : Vacant -----



Bed Room(s)



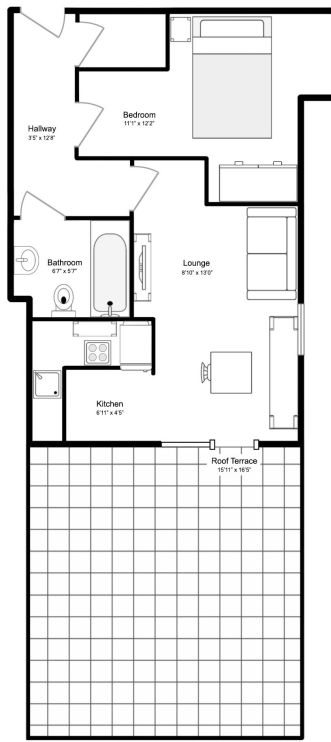
Bath Room(s)



Living Room(s)

FLOOR PLAN

Illustrations are for identification purposes only and are not to scale.
All measurements are a maximum and include wardrobes and bay windows where applicable.



EPC GRAPH

Illustrations are for identification purposes only and are not to scale.
All measurements are a maximum and include wardrobes and bay windows where applicable.

Dwelling type: Top-floor flat
Date of assessment: 15 February 2018
Date of certificate: 15 February 2018
Reference number: 9658-9056-7222-5268-3984
Type of assessment: RdSAP, existing dwelling
Total floor area: 39 m²

Use this document to:

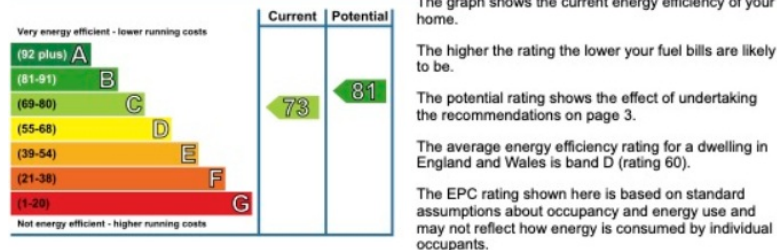
- Compare current ratings of properties to see which properties are more energy efficient
- Find out how you can save energy and money by installing improvement measures

Estimated energy costs of dwelling for 3 years:	£ 1,434
Over 3 years you could save	£ 489

Estimated energy costs of this home			
	Current costs	Potential costs	Potential future savings
Lighting	£ 153 over 3 years	£ 111 over 3 years	
Heating	£ 810 over 3 years	£ 507 over 3 years	
Hot Water	£ 471 over 3 years	£ 327 over 3 years	
Totals	£ 1,434	£ 945	

These figures show how much the average household would spend in this property for heating, lighting and hot water and is not based on energy used by individual households. This excludes energy use for running appliances like TVs, computers and cookers, and electricity generated by microgeneration.

Energy Efficiency Rating



Top actions you can take to save money and make your home more efficient

Disclaimer: The information displayed about this property comprises a property advertisement. 99home.co.uk (/) will not make no warranty for the accuracy or completeness of the advertisement or any linked or associated information, and 99home has no control over the content. This property advertisement does not constitute property particulars, the property may offer to tenants in same condition as they have seen on time of the viewing. The information is provided and maintained by 99home.co.uk (/)

