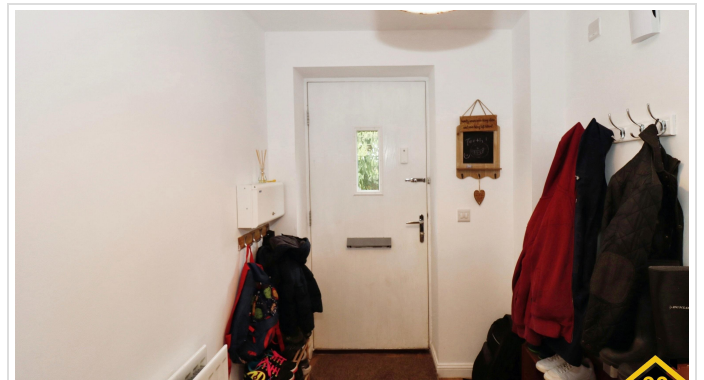


3 Bed End Of Terrace In Cirencester Road , Tetbury, GL8 8GJ

£143,500





## SHORT DESCRIPTION

Property Ref: 13812 We are pleased to present an exceptional End of Terrace located at Cirencester Road, Tetbury, GL8. This wonderful residence boasts 3 bedrooms, 2 bathrooms, and 1 living room, offering ample space for comfortable living. Additionally, it features a fully-fitted kitchen, ideal for culinary enthusiasts, along with the convenience of a Front Garden, Rear Garden, and Allocated parking. Positioned in a prime location, this property offers easy access to a range of local amenities and public transportation, ensuring convenience for residents. Its proximity to esteemed schools and a college enhances its appeal, providing families with access to excellent educational opportunities. This residence embodies the perfect blend of comfort, convenience, and quality living, making it an ideal choice for discerning individuals or families seeking a place to call home. Discover the perfect blend of countryside charm and modern living with this delightful three-bedroom end-terrace home, nestled in the picturesque Cotswolds. Available on a shared ownership basis, this property is an ideal opportunity for first-time buyers or those looking to step onto the property ladder in a highly sought-after area. Upon entering, you're welcomed by a spacious hallway that leads to a bright and airy front room, perfect for relaxing with family or entertaining guests. The heart of the home is the modern kitchen-diner, designed for both style and functionality, offering ample space for cooking, dining, and socializing. Large windows ensure plenty of natural light, creating a warm and inviting atmosphere. Upstairs, the property boasts three generously sized bedrooms, providing flexibility for family living, a home office, or guest accommodation. The master bedroom features easy access to the main bathroom, while a second contemporary bathroom adds convenience and comfort for family and visitors alike. Outside, the property benefits from a charming garden, with a playhouse for the children. As an end-terrace home, you'll enjoy extra privacy and space, with side access to the garden and the property has 2 allocated parking options. Located in the heart of the Cotswolds, this cottage is situated in the popular village of Tetbury, with access to local amenities a short walk away. With good local schools, and excellent transport links. This is your chance to live in the beautiful Cotswolds, with the flexibility of shared ownership making it more affordable than ever.

3

Bed Room(s)

2

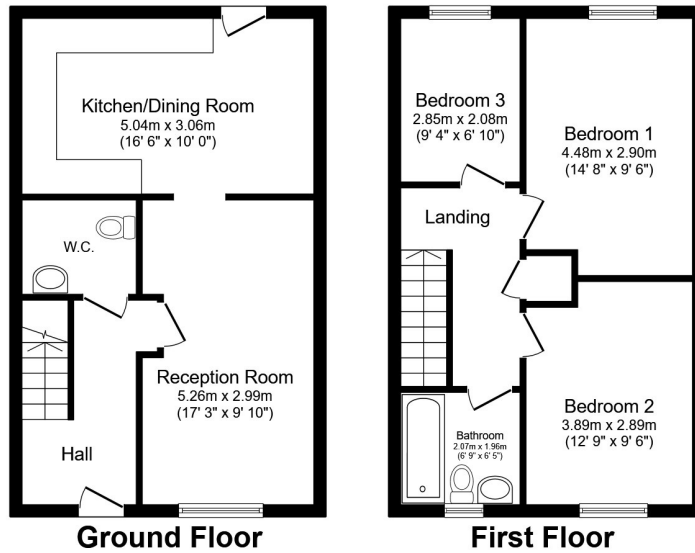
Bath Room(s)

1

Living Room(s)

## FLOOR PLAN

Illustrations are for identification purposes only and are not to scale.  
All measurements are a maximum and include wardrobes and bay windows where applicable.



Total floor area 86.0 sq.m. (926 sq.ft.) approx

This floor plan is for illustrative purposes only. It is not drawn to scale. Any measurements, floor areas (including any total floor area), openings and orientation are approximate. No details are guaranteed, they cannot be relied upon for any purpose and they do not form part of any agreement. No liability is taken for any error, omission or misstatement. A party must rely upon its own inspection(s). Powered by [www.focalagent.com](http://www.focalagent.com)

## EPC GRAPH

Illustrations are for identification purposes only and are not to scale.

All measurements are a maximum and include wardrobes and bay windows where applicable.

Score	Energy rating	Current	Potential
92+	A		95 A
81-91	B	84 B	
69-80	C		
55-68	D		
39-54	E		
21-38	F		
1-20	G		

**Disclaimer:** The information displayed about this property comprises a property advertisement. 99home.co.uk (/) will not make no warranty for the accuracy or completeness of the advertisement or any linked or associated information, and 99home has no control over the content. This property advertisement does not constitute property particulars, the property may offer to tenants in same condition as they have seen on time of the viewing. The information is provided and maintained by 99home.co.uk (/)

