

2 Bed Semi-Detached Bungalow In Albemarle Avenue Twickenham, Whitton,  
TW2 6AJ

£2,025 Monthly





## SHORT DESCRIPTION

Property Ref: 13565 99home presents a two-bed bungalow for immediate rental. FULLY REFURBISHED and in new condition, spacious accommodation. 2 beds, 2 bathrooms, 2 receptions Monthly rent: £2025 Weekly rent: £467 EPC Rating: D Deposit: 5 Weeks Council Band: D Located on Albemarle Avenue within the ever-popular Woodlawn Development, this semi-detached bungalow is in good condition throughout. There are two good-sized bedrooms with the main bedroom measuring an impressive 10'10 x 10'9 with the added benefits of fitted wardrobes. The reception room is also a good size measuring 16'2 x 11'2 giving access to the LARGE conservatory with WC & south-west facing good-size rear garden via French doors. Further benefits include a newly fitted modern bathroom/shower suite, a newly fitted kitchen with NEW appliances, gas central heating, own gated inside parking (with more additional free on-street parking), and a location close to a choice of schools, bus routes, local shops, and the beautiful Crane Park nature reserve. Crane Park Primary School: 0.4 miles Heathfield Junior School: 0.4 miles Whitton British Rail (London): 0.9 miles Hounslow British Rail: 1.3 miles (These distances are approx.)...



Bed Room(s)



Bath Room(s)

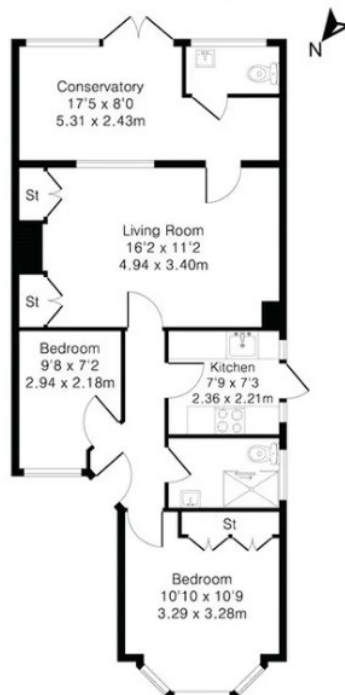


Living Room(s)

## FLOOR PLAN

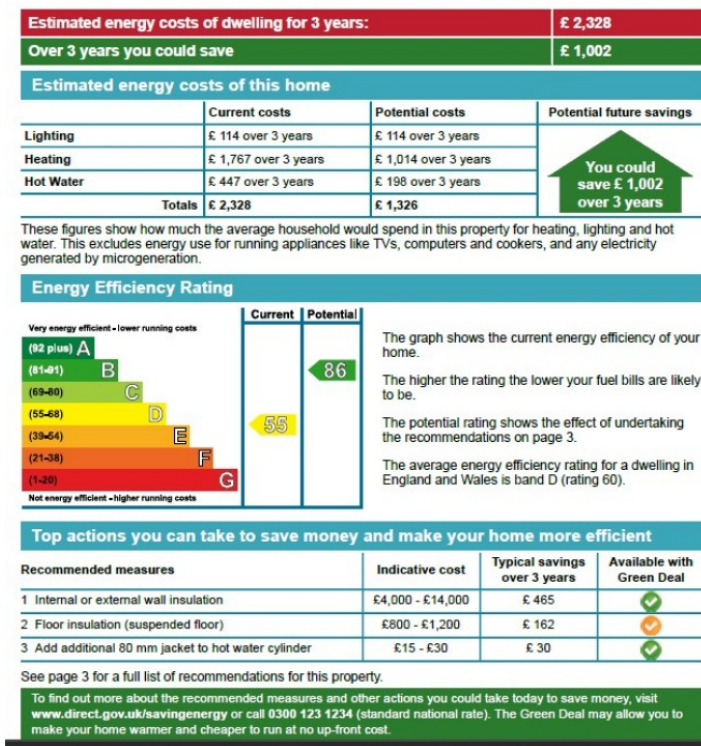
Illustrations are for identification purposes only and are not to scale.  
All measurements are a maximum and include wardrobes and bay windows where applicable.

Approximate Gross Internal Area 699 sq ft – 65 sq m



# EPC GRAPH

Illustrations are for identification purposes only and are not to scale.  
All measurements are a maximum and include wardrobes and bay windows where applicable.



**Disclaimer:** The information displayed about this property comprises a property advertisement. 99home.co.uk (/) will not make no warranty for the accuracy or completeness of the advertisement or any linked or associated information, and 99home has no control over the content. This property advertisement does not constitute property particulars, the property may offer to tenants in same condition as they have seen on time of the viewing. The information is provided and maintained by 99home.co.uk (/)

Company registration number in England : 10469887 VAT: 263 3023 36  
Copyright © 99Home Limited 2017. All rights reserved.