

5 Bed Detached In Fossdale Moss , Leyland, PR26 7AS

£2,000 Monthly





SHORT DESCRIPTION

Property Ref: 13506 Council Tax:E THIS PROPERTY IS UN-FURNISHED (THE FURNITURE IN THE IMAGES ARE FOR INFORMATION ONLY AND ARE NOT INCLUDED) Situated on a quiet cul-de-sac in the highly desirable Leyland area, this immaculately presented 5-bedroom detached house offers a strategic location with easy access to Preston city centre and various countryside getaways, allowing you to enjoy both urban and rural lifestyles. The property features a driveway that comfortably accommodates two cars, with an additional 2 spaces to the side, ideal for visitors or a growing family's needs. Inside, the house boasts three reception rooms. The spacious living room opens into a second good-sized room and then conservatory - all versatile to suit many uses. The highlight of the home is the fantastic extended kitchen dining room overlooking the garden, serving as the heart of the home. This area offers ample space for family gatherings and meals, combining a fully-equipped kitchen with a dining area ideal for casual dining and socializing. An adjacent utility room adds extra convenience and functionality as well as internal passageway to the spacious double garage. Upstairs, the bedrooms are designed for comfort and relaxation. The primary and secondary bedroom each include an ensuite bathroom. Bedrooms 3 and 4 are doubles, and bedroom 5 is a generous size, suitable for a single room, currently fitted as an office. The family bathroom is well-appointed, offering a shower over the bath, catering to the entire household. Outside, the sunny rear garden provides a serene retreat with low maintenance. Local information Leyland is a town in South Ribble, Lancashire. Six miles (10 km) south of Preston. Leyland is made up by six different areas, the town centre itself counts as the main retail side, with the railway station, library and shops nearby. The other areas include Broadfield, Moss Side, Worden Park, Turpin Green and the Wade Hall estate. The town is famous primarily for the bus and truck manufacturer Leyland Motors. Within easy reach of the local amenities and highly regarded local primary and secondary schools, as well as colleges - whilst being particularly well-placed for transport and commuter links with M6 nearby.

5

Bed Room(s)

4

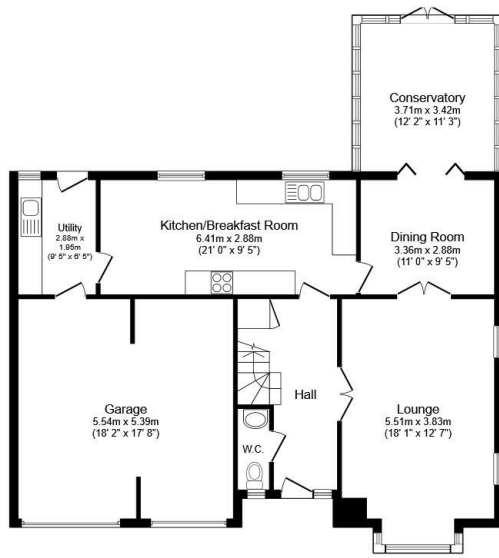
Bath Room(s)

1

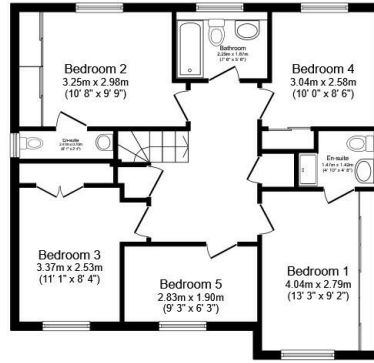
Living Room(s)

FLOOR PLAN

Illustrations are for identification purposes only and are not to scale.
All measurements are a maximum and include wardrobes and bay windows where applicable.



Ground Floor



First Floor

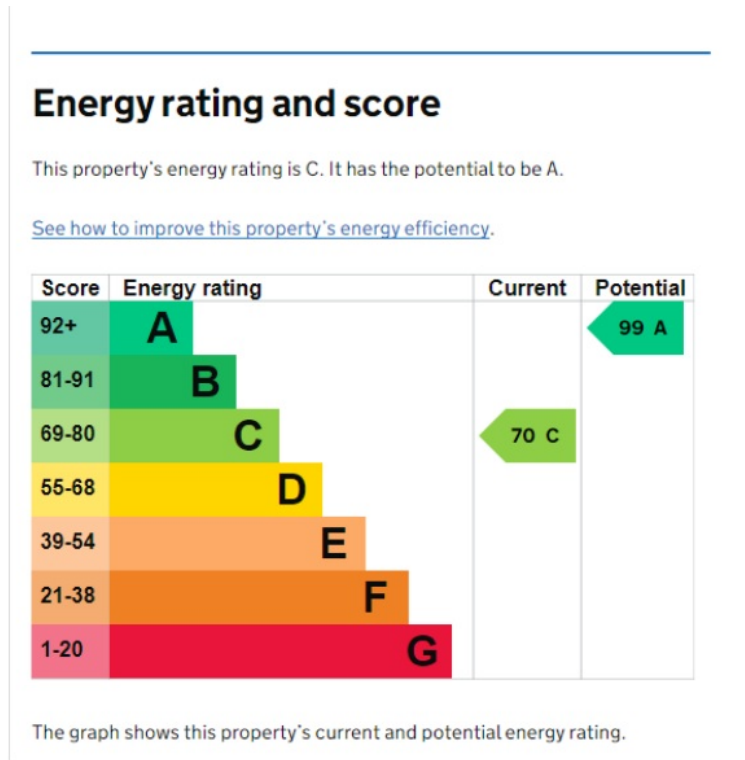
Total floor area 184.8 sq.m. (1,989 sq.ft.) approx

This floor plan is for illustrative purposes only. It is not drawn to scale. Any measurements, floor areas (including any total floor area), openings and orientation are approximate. No details are guaranteed, they cannot be relied upon for any purpose and they do not form part of any agreement. No liability is taken for any error, omission or misstatement. A party must rely upon its own inspection(s). Plan produced for Reed Rains. Powered by www.focalagent.com

EPC GRAPH

Illustrations are for identification purposes only and are not to scale.

All measurements are a maximum and include wardrobes and bay windows where applicable.



Disclaimer: The information displayed about this property comprises a property advertisement. 99home.co.uk (/) will not make no warranty for the accuracy or completeness of the advertisement or any linked or associated information, and 99home has no control over the content. This property advertisement does not constitute property particulars, the property may offer to tenants in same condition as they have seen on time of the viewing. The information is provided and maintained by 99home.co.uk (/)

