

2 Bed Semi-Detached In Birmingham , Birmingham, B31 3EH

£121,000





SHORT DESCRIPTION

Property Ref: 13487 Council Tax:B TWO DOUBLE BEDROOM SEMI DETACHED HOUSE. PRIVATE DRIVE. OPEN PLAN KITCHEN/DINING ROOM. Great location, short distance from train stations and close to amenable schools. Great access to the motorway/local bus routes. Ideally situated by the beautiful Rea Valley walks and fields. Spacious kitchen diner - recently updated/ modernised with a white ceramic sink. Kitchen/diner floor screeded with laminate hard wear flooring to last years. Open bright living room. Very light house, retains heat, always warm.. low cost bills. Stairs & Landing - With carpeted floor covering. Two large bedrooms. Master bedroom With carpeted floor covering, bright and cosy with two windows. Bedroom two - large room with carpeted floor covering. All house rooms recently decorated throughout. Bathroom - New modern walk in shower cubicle with mixer shower, splash back paneling, Downstairs toilet. Gardens: To the front of the property there is a private drive leading to the house and a small side garden with shrubs. To the rear of the property there is a sizeable garden. A very Spacious back garden..



Bed Room(s)



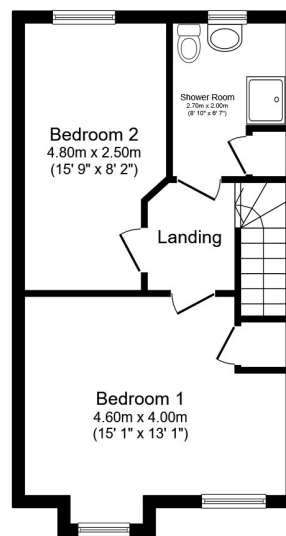
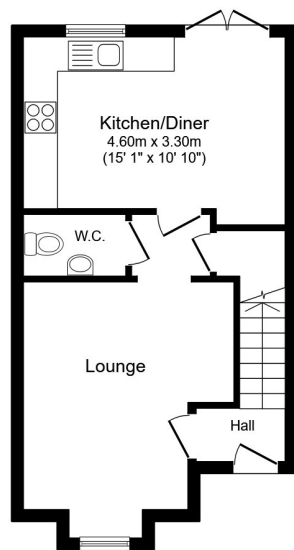
Bath Room(s)



Living Room(s)

FLOOR PLAN

Illustrations are for identification purposes only and are not to scale.
All measurements are a maximum and include wardrobes and bay windows where applicable.

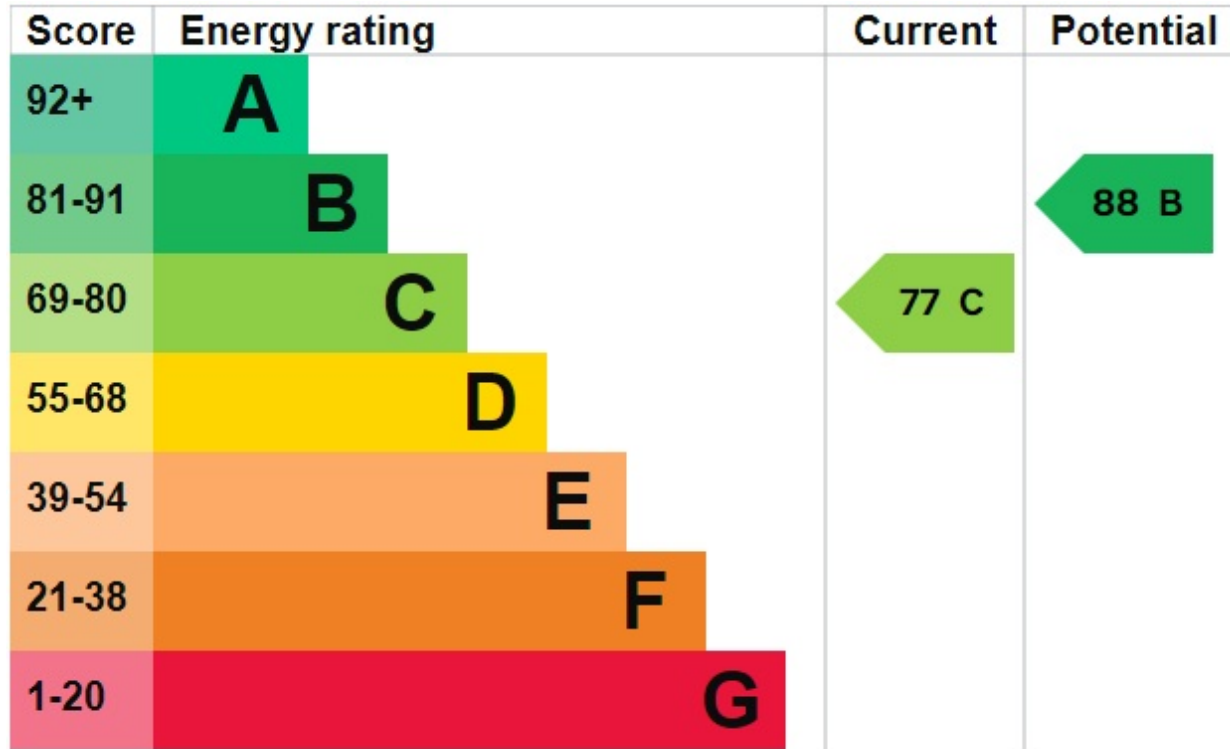


Total floor area 76.2 m² (820 sq.ft.) approx

This floor plan is for illustrative purposes only. It is not drawn to scale. Any measurements, floor areas (including any total floor area), openings and orientation are approximate. No details are guaranteed, they cannot be relied upon for any purpose and they do not form part of any agreement. No liability is taken for any error, omission or misstatement. A party must rely upon its own inspection(s). Powered by www.focalagent.com

EPC GRAPH

Illustrations are for identification purposes only and are not to scale.
All measurements are a maximum and include wardrobes and bay windows where applicable.



Disclaimer: The information displayed about this property comprises a property advertisement. 99home.co.uk (/) will not make no warranty for the accuracy or completeness of the advertisement or any linked or associated information, and 99home has no control over the content. This property advertisement does not constitute property particulars, the property may offer to tenants in same condition as they have seen on time of the viewing. The information is provided and maintained by 99home.co.uk (/)

Company registration number in England : 10469887 VAT: 263 3023 36
Copyright © 99Home Limited 2017. All rights reserved.