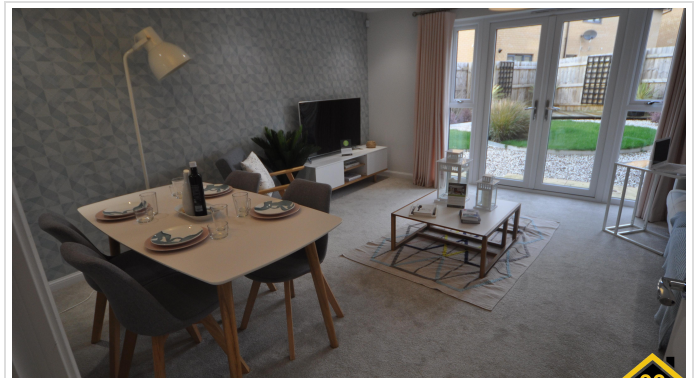


3 Bed End Of Terrace In Poplar Close , Plymouth, PL7 2GE

£295,000





SHORT DESCRIPTION

Property Ref: 13481 Council tax:C A delightful three bedroom home offering open-plan lounge and dining room with French doors to the garden. Stylish kitchen with built in appliances. First Floor has a master bedroom with en-suite shower room, one further double bedroom, single bedroom and a family bathroom. Level garden and benefits from parking for two cars. Former show house. EPC rating is B. Ground floor benefits from good sized kitchen with built in fridge freezer, dishwasher, oven, hob, washing machine boiler cupboard with new combination boiler. Hallway consists of separate cloakroom. Very spacious lounge with French doors to rear garden. First floor consists of master bedroom with en- suite shower room and built in wardrobes. Further double bedrooms with built in wardrobes, airing cupboard, single bedroom and family bathroom. The gardens front and rear are level and there is a driveway for parking of two cars. Advise viewing as soon as possible to avoid disappointment...

3

Bed Room(s)

2

Bath Room(s)

1

Living Room(s)

FLOOR PLAN

Illustrations are for identification purposes only and are not to scale.

All measurements are a maximum and include wardrobes and bay windows where applicable.



EPC GRAPH

Illustrations are for identification purposes only and are not to scale.
All measurements are a maximum and include wardrobes and bay windows where applicable.

[You can read guidance for landlords on the regulations and exemptions.](#)

Energy rating and score

This property's energy rating is B. It has the potential to be A.

[See how to improve this property's energy efficiency.](#)

Score	Energy rating	Current	Potential
92+	A		96 A
81-91	B	84 B	
69-80	C		
55-68	D		
39-54	E		
21-38	F		
1-20	G		

The graph shows this property's current and potential energy rating.

Properties get a rating from A (best) to G (worst) and a score. The better the rating and score, the lower your energy bills are likely to be.

For properties in England and Wales:

- the average energy rating is D
- the average energy score is 60

Disclaimer: The information displayed about this property comprises a property advertisement. 99home.co.uk (/) will not make no warranty for the accuracy or completeness of the advertisement or any linked or associated information, and 99home has no control over the content. This property advertisement does not constitute property particulars, the property may offer to tenants in same condition as they have seen on time of the viewing. The information is provided and maintained by 99home.co.uk (/)

Company registration number in England : 10469887 VAT: 263 3023 36
Copyright © 99Home Limited 2017. All rights reserved.