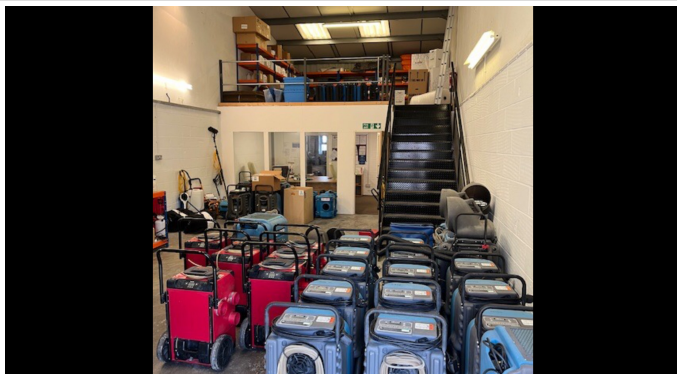
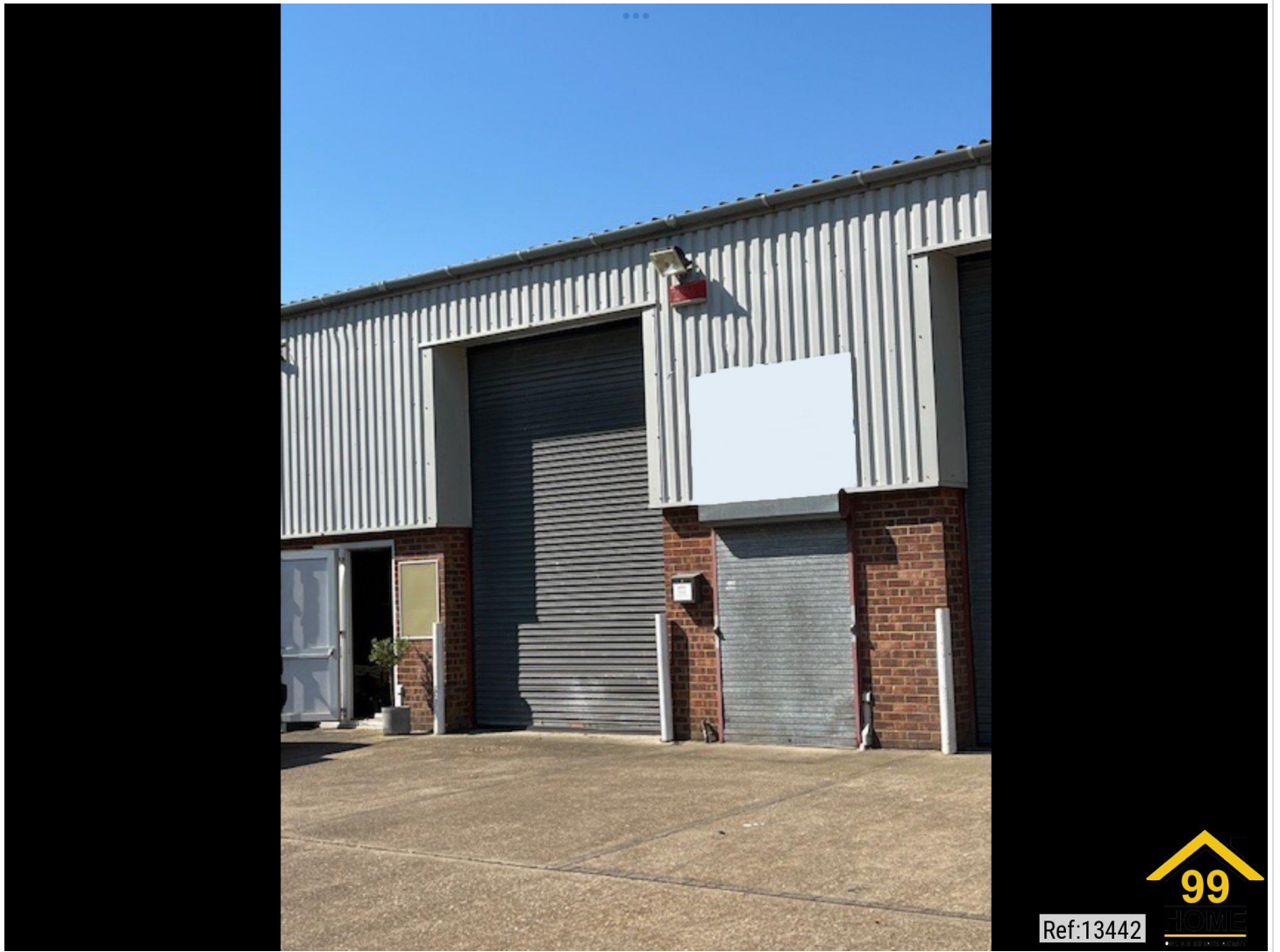
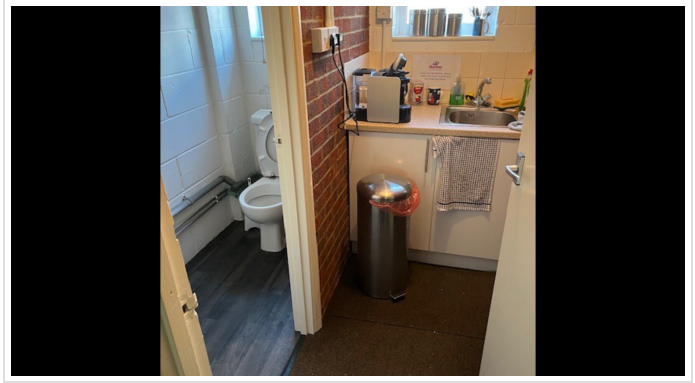
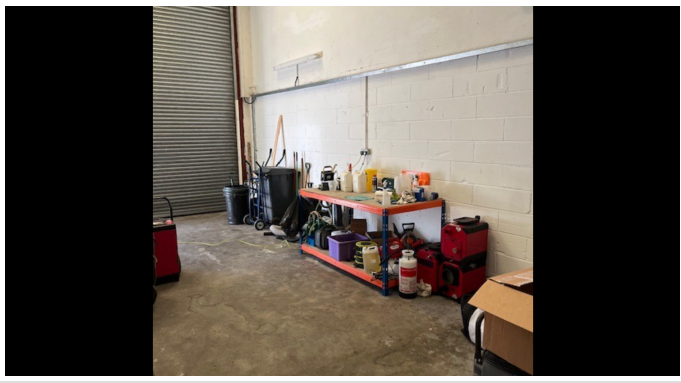


0 Bed Warehouse In City Business Park, Marshwood Close , Canterbury, CT1
1DX £1,473 Monthly





SHORT DESCRIPTION

Property Ref:13442 116 square meters of space, with 86 square meters on the ground floor and 30 square meters of mezzanine floor, with a steel staircase to it. The mezzanine could be extended by the tenant if required. Clean tidy unit with 4 allocated parking spaces within a gated estate. There is a toilet, kitchen and office space on the ground floor, which could easily be adapted by the tenant, to suit their needs. The rent is plus VAT and on a flexible license with a 3 month notice period. 1.1 miles from Canterbury East station. 1.5 miles from Canterbury West station...

0

Bed Room(s)

1

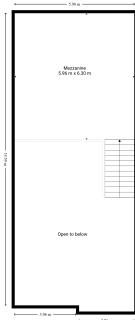
Bath Room(s)

0

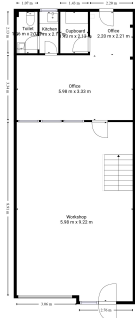
Living Room(s)

FLOOR PLAN

Illustrations are for identification purposes only and are not to scale. All measurements are a maximum and include wardrobes and bay windows where applicable.



Measurements are deemed highly reliable but not guaranteed to be exact.
FIGURE 2



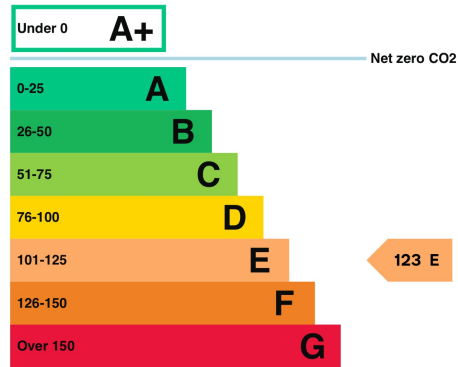
Measurements are deemed highly reliable but not guaranteed to be exact.
FIGURE 1

EPC GRAPH

Illustrations are for identification purposes only and are not to scale. All measurements are a maximum and include wardrobes and bay windows where applicable.

Energy rating and score

This property's energy rating is E.



Properties get a rating from A+ (best) to G (worst) and a score.

The better the rating and score, the lower your property's carbon emissions are likely to be.

Disclaimer: The information displayed about this property comprises a property advertisement. 99home.co.uk (/) will not make no warranty for the accuracy or completeness of the advertisement or any linked or associated information, and 99home has no control over the content. This property advertisement does not constitute property particulars, the property may offer to tenants in same condition as they have seen on time of the viewing. The information is provided and maintained by 99home.co.uk (/)
