

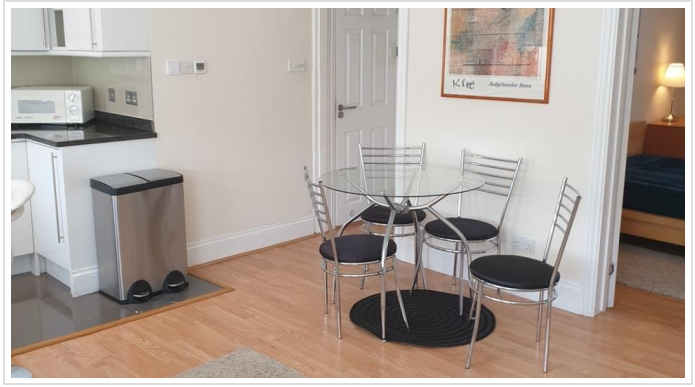
1 Bed Flat In Second Floor Flat 2 , London, W6 0SP

£1,950 Monthly



Ref:13425





SHORT DESCRIPTION

Property Ref: 13425 This lovely, stylish, fully furnished flat with one double bedroom is available for rent starting 20 of June. Freshly decorated and refurbished to a very high standard, the flat features an open-plan layout with a white, fully fitted kitchen that includes a dishwasher, ceramic hob, and black granite worktops. The bathroom is luxurious, adding a touch of elegance to the space. The reception area boasts a large sofa, a charming fireplace, and wooden floors throughout, providing a warm and inviting atmosphere. The flat offers a picturesque view of the tree-lined King Street. Located in a prime area, the flat has upscale Chiswick to the west and central Hammersmith to the east, with the River Thames situated to the south. It is conveniently just a 5-minute walk from Ravenscourt Park tube station and 10 minutes away from Hammersmith station and shopping centre. The vibrant, tree-lined King Street, adjacent to Ravenscourt Park, is surrounded by excellent restaurants and bars. This flat is perfect for non-smoking, professional couples. Please note that no agents, pets, children, or DSS applicants are allowed..



Bed Room(s)



Bath Room(s)



Living Room(s)

FLOOR PLAN

Illustrations are for identification purposes only and are not to scale.
All measurements are a maximum and include wardrobes and bay windows where applicable.

EPC GRAPH

Illustrations are for identification purposes only and are not to scale.
All measurements are a maximum and include wardrobes and bay windows where applicable.

Energy rating and score

This property's energy rating is C. It has the potential to be C.

[See how to improve this property's energy efficiency.](#)

Score	Energy rating	Current	Potential
92+	A		
81-91	B		
69-80	C	76 C	80 C
55-68	D		
39-54	E		
21-38	F		
1-20	G		

The graph shows this property's current and potential energy rating.

Properties get a rating from A (best) to G (worst) and a score. The better the rating and score, the lower your energy bills are likely to be.

For properties in England and Wales:

- the average energy rating is D
- the average energy score is 60

Disclaimer: The information displayed about this property comprises a property advertisement. 99home.co.uk (/) will not make no warranty for the accuracy or completeness of the advertisement or any linked or associated information, and 99home has no control over the content. This property advertisement does not constitute property particulars, the property may offer to tenants in same condition as they have seen on time of the viewing. The information is provided and maintained by 99home.co.uk (/)

Company registration number in England : 10469887 VAT: 263 3023 36
Copyright © 99Home Limited 2017. All rights reserved.