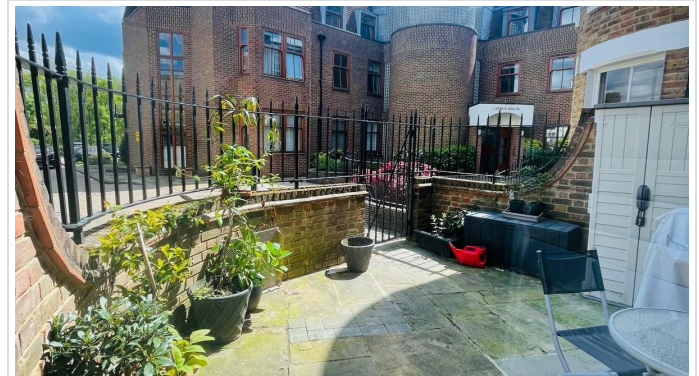


2 Bed Flat In John Day House Lower Square, Isleworth, TW7 6XH £2,250 Monthly





## SHORT DESCRIPTION

Property Ref: 13211 Council Tax:F Stunning two double bedroom apartment with a modern open plan newly renovated kitchen/ reception room with fully integrated appliances, spacious principle bedroom with built in storage, large second bedroom and contemporary family bathroom. The property has the added benefit of allocated gated parking and private outdoor patio accessed from the living room. Situated in the desirable modern riverside development, fronting Richmond's Old Deer Park and Kew Gardens, Old Isleworth is a pretty village with a beautifully preserved centre and a selection of shops and amenities. The nearest stations are Isleworth and Syon Lane providing a rail service to London Waterloo whilst the commuter also has the option of rail and District Line underground services from Richmond Station....



**Bed Room(s)**



**Bath Room(s)**



**Living Room(s)**

## FLOOR PLAN

Illustrations are for identification purposes only and are not to scale.  
All measurements are a maximum and include wardrobes and bay windows where applicable.



**GROUND FLOOR**

TOTAL APPROX. FLOOR AREA 824 SQ. FT. (76.6 SQ. M.)

## EPC GRAPH

Illustrations are for identification purposes only and are not to scale.  
All measurements are a maximum and include wardrobes and bay windows where applicable.

---

## Energy rating and score

This property's energy rating is C. It has the potential to be C.

[See how to improve this property's energy efficiency.](#)

Score	Energy rating	Current	Potential
92+	A		
81-91	B		
69-80	C	72 C	79 C
55-68	D		
39-54	E		
21-38	F		
1-20	G		

The graph shows this property's current and potential energy rating.

**Properties get a rating from A (best) to G (worst) and a score.** The better the rating and score, the lower your energy bills are likely to be.

For properties in England and Wales:

- the average energy rating is D
- the average energy score is 60

---

**Disclaimer:** The information displayed about this property comprises a property advertisement. 99home.co.uk (/) will not make no warranty for the accuracy or completeness of the advertisement or any linked or associated information, and 99home has no control over the content. This property advertisement does not constitute property particulars, the property may offer to tenants in same condition as they have seen on time of the viewing. The information is provided and maintained by 99home.co.uk (/)

---

Company registration number in England : 10469887 VAT: 263 3023 36  
Copyright © 99Home Limited 2017. All rights reserved.