

2 Bed Flat In 2 Middle Mead , Cirencester, GL7 1GP

£46,250





SHORT DESCRIPTION

Property Ref: 13181 99home are pleased to market this good size 2 bedroom first floor flat in a prime location. With private allocated car parking. As you open the door you are greeted with a spacious hallway leading to the main bedroom that is a generous size with 2 large built in wardrobes. The second bedroom is also a good size with 2 double glazed windows to let plenty of natural light into the property. The heart of the home is a combined kitchen and living space. The modern kitchen comes equipped with plenty of space and storage. The living space has plenty of room to use as either a dining room or a cosy living room. There are 2 double glazed windows in this space letting plenty of sunlight through. There is a modern style family bathroom equipped with and bath and a shower. In the hallway is a large storage space that could easily be used as a small office space. This property is within walking distance of the Town in Cirencester, a short drive to Kemble train station and bus stops are very close by. Address: Flat , 2 Middlemead GL7 1GP Why not call our dedicated sales team today and book your appointment?.



Bed Room(s)



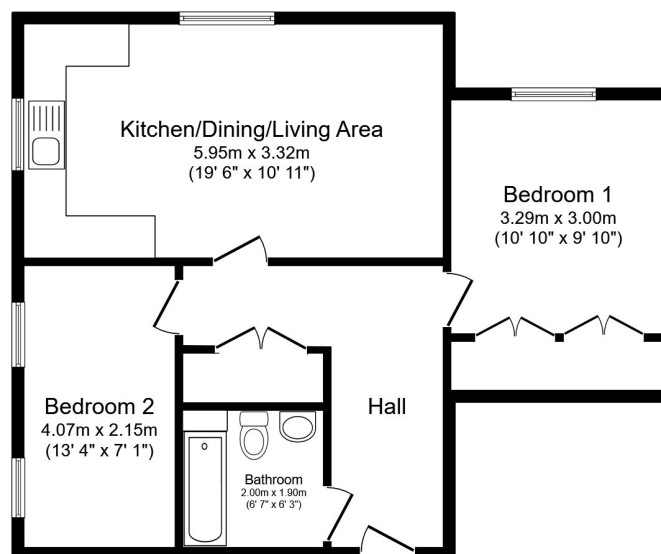
Bath Room(s)



Living Room(s)

FLOOR PLAN

Illustrations are for identification purposes only and are not to scale.
All measurements are a maximum and include wardrobes and bay windows where applicable.



Total floor area 56.9 sq.m. (613 sq.ft.) approx

This floor plan is for illustrative purposes only. It is not drawn to scale. Any measurements, floor areas (including any total floor area), openings and orientation are approximate. No details are guaranteed, they cannot be relied upon for any purpose and they do not form part of any agreement. No liability is taken for any error, omission or misstatement. A party must rely upon its own inspection(s). Powered by www.focalagent.com

EPC GRAPH

Illustrations are for identification purposes only and are not to scale.
All measurements are a maximum and include wardrobes and bay windows where applicable.

Score	Energy rating	Current	Potential
92+	A		
81-91	B	81 B	81 B
69-80	C		
55-68	D		
39-54	E		
21-38	F		
1-20	G		

Disclaimer: The information displayed about this property comprises a property advertisement. 99home.co.uk (/) will not make no warranty for the accuracy or completeness of the advertisement or any linked or associated information, and 99home has no control over the content. This property advertisement does not constitute property particulars, the property may offer to tenants in same condition as they have seen on time of the viewing. The information is provided and maintained by 99home.co.uk (/)

Company registration number in England : 10469887 VAT: 263 3023 36
Copyright © 99Home Limited 2017. All rights reserved.