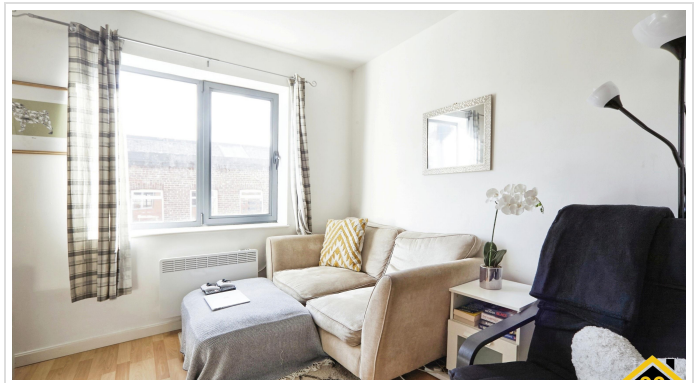


1 Bed Apartment In Twenty Twenty House, Skinner Lane,, Leeds, LS7 1BH

£42,500





## **SHORT DESCRIPTION**

---

Property Ref: 12810 Welcome to Twenty Twenty House, situated on Skinner Lane in the vibrant city of Leeds, LS7 1BH. This contemporary residence offers a perfect blend of comfort and convenience, ideal for those seeking a stylish urban lifestyle. **Bedroom:** Step into the cozy embrace of the bedroom, designed to provide a peaceful retreat after a busy day. With ample space and natural light, this room offers a tranquil ambiance for rest and relaxation. Complete with modern fixtures and tasteful decor, it ensures a comfortable and inviting atmosphere. **Bathroom:** The well-appointed bathroom boasts modern amenities and elegant finishes, providing a luxurious sanctuary for self-care. From the sleek fittings to the refreshing ambiance, every detail is crafted to enhance your daily routine. Whether you prefer a quick shower or a leisurely soak in the tub, this space caters to your every need. **Living Room:** The spacious living room serves as the heart of the home, where style meets functionality. Flooded with natural light and adorned with contemporary furnishings, it offers a welcoming environment for both relaxation and entertainment. Whether you're unwinding with a book, hosting guests, or enjoying movie nights, this versatile space adapts to your lifestyle with ease. **Additional Features:** Open-plan layout for seamless flow between living spaces Modern kitchen equipped with high-end appliances and ample storage Convenient location with easy access to amenities, dining, and entertainment options Secure entry system for peace of mind Well-maintained communal areas for residents' enjoyment Don't miss the opportunity to make this stylish residence your own and experience urban living at its finest. Contact us today to schedule a viewing and discover the charm of Twenty Twenty House..



**Bed Room(s)**



**Bath Room(s)**

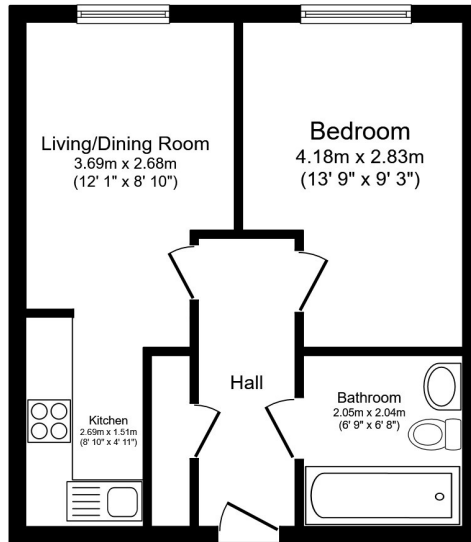


**Living Room(s)**

## **FLOOR PLAN**

---

Illustrations are for identification purposes only and are not to scale.  
All measurements are a maximum and include wardrobes and bay windows where applicable.



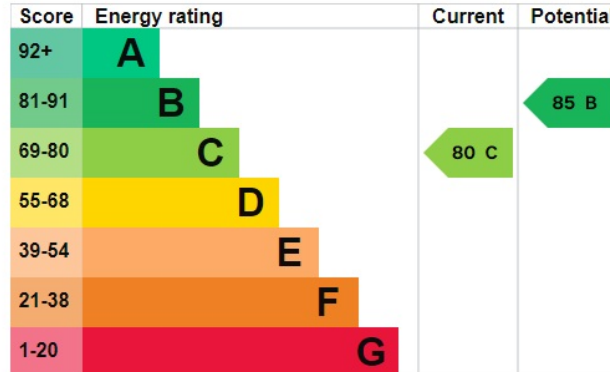
Total floor area 36.3 m<sup>2</sup> (391 sq.ft.) approx

This floor plan is for illustrative purposes only. It is not drawn to scale. Any measurements, floor areas (including any total floor area), openings and orientation are approximate. No details are guaranteed, they cannot be relied upon for any purpose and they do not form part of any agreement. No liability is taken for any error, omission or misstatement. A party must rely upon its own inspection(s). Powered by www.focalagent.com

## EPC GRAPH

Illustrations are for identification purposes only and are not to scale.  
All measurements are a maximum and include wardrobes and bay windows where applicable.

[See how to improve this property's energy efficiency.](#)



The graph shows this property's current and potential energy rating.

Properties get a rating from A (best) to G (worst) and a score. The better the rating and score, the lower your energy bills are likely to be.

For properties in England and Wales:

- the average energy rating is D
- the average energy score is 60

**Disclaimer:** The information displayed about this property comprises a property advertisement. 99home.co.uk (/) will not make no warranty for the accuracy or completeness of the advertisement or any linked or associated information, and 99home has no control over the content. This property advertisement does not constitute property particulars, the property may offer to tenants in same condition as they have seen on time of the viewing. The information is provided and maintained by 99home.co.uk (/)

