

2 Bed Detached Bungalow In 46 Harker Close , Gloucester, GL2 5SG £76,500



SHORT DESCRIPTION

Property Ref: G12671 This 2 bedroom property is available to purchase using the Shared Ownership scheme. Shared Ownership is another way to buy your home. You buy a percentage and pay rent on the rest. Guinness owns part of it - but you're living there, you decorate it and decide when to sell. Buying a percentage means a smaller deposit and a smaller mortgage. It's a sooner first step on the ladder for lots of people. In the future, you can carry on buying further shares to own it 100%. Welcome to The Waterfront Final chance to reserve at The Waterfront! The Gloucester Quays are not only a desirable place to live, thanks to excellent transport connections to Cheltenham, Bristol, and even Birmingham, but Gloucester itself and its surrounding areas offer a wealth of attractions. Residents and visitors can enjoy a tantalizing mix of shops, popular festivals, renowned museums, and endless entertainment options. For outdoor enthusiasts, the dockside is nestled in the lush Severn Valley, overlooked by the picturesque Cotswold Hills, providing ample opportunities for exploration and relaxation. Full price: £255,000 30% share price: £76,500 Monthly rent based on a 30% share: £409.06 Service charge: £75.38 Minimum share initially available: 30% Maximum

share initially available: 75% Staircasing to 100% allowable Tenure: Leasehold Lease term: 990 years Council Tax: TBC - new build Floorplan type: The Nith



Bed Room(s)



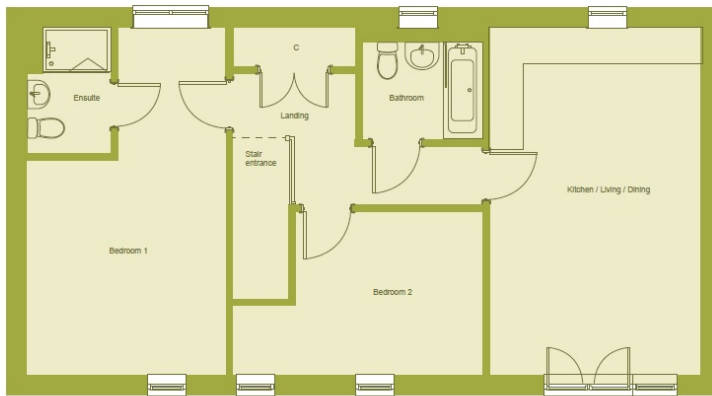
Bath Room(s)



Living Room(s)

FLOOR PLAN

Illustrations are for identification purposes only and are not to scale.
All measurements are a maximum and include wardrobes and bay windows where applicable.



The Nith 2 bedroom coach houses

Plots 389, 390

Kitchen/Living/Dining	6.25m x 3.76m	20'5" x 12'3"
Bedroom 1	6.25m x 3.75m	20'5" x 12'3"
Bedroom 2	4.55m x 2.98m	14'9" x 9'9"

Two bedroom coach house
Comprising of an entrance hall, open plan kitchen, dining and living space, storage, bathroom and two bedrooms.

EPC GRAPH

Illustrations are for identification purposes only and are not to scale.
All measurements are a maximum and include wardrobes and bay windows where applicable.

Disclaimer: The information displayed about this property comprises a property advertisement. 99home.co.uk (/) will not make no warranty for the accuracy or completeness of the advertisement or any linked or associated information, and 99home has no control over the content. This property advertisement does not constitute property particulars, the property may offer to tenants in same condition as they have seen on time of the viewing. The information is provided and maintained by 99home.co.uk (/)

Company registration number in England : 10469887 VAT: 263 3023 36
Copyright © 99Home Limited 2017. All rights reserved.