

2 Bed Flat In Victoria Chambers Paul Street, Shoreditch, EC2A 4ED £449,950





SHORT DESCRIPTION

Property Ref: 11972 Sold with a share of the freehold, this spacious two-bedroom apartment is situated in a period mansion block in the heart of Shoreditch. Benefitting from some great original features, this apartment would work well as both a home, pied a terre or buy-to-let investment. Residents also have access to a communal courtyard and roof terrace along with bike storage and communal laundry facilities. You are right in the centre of all the Shoreditch action here, yet being in the flat is quiet and gives a real sense of peacefulness. Around you is a wealth of transport links, including Old Street Station, Liverpool Street Station and Shoreditch Overground. Just reduced in price by a motivated seller and sold with vacant possession, early viewings are recommended..... Property Type: Flat Full selling price: £449950.00 Pricing Options: Guide Price Tenure: Share of Freehold Council tax band: C EPC rating: D Measurement: 478.02 sq.ft. Outside Space: Communal Garden, Shared Garden Parking: Permit Heating Type: Gas Heating Chain Sale or Chain Free: Chain free Possession of the property: vacant -----

2

Bed Room(s)

1

Bath Room(s)

1

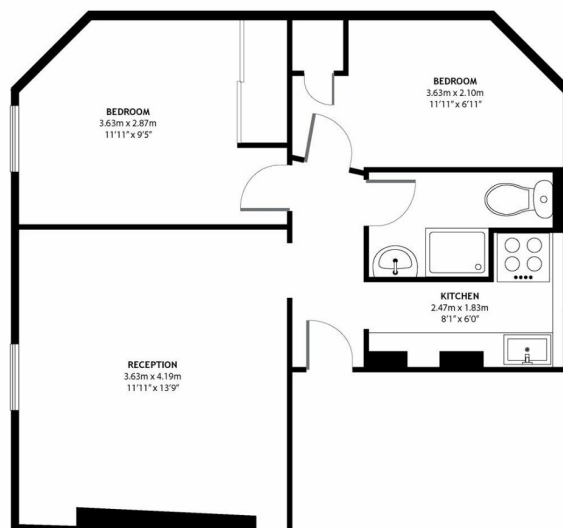
Living Room(s)

FLOOR PLAN

Illustrations are for identification purposes only and are not to scale.
All measurements are a maximum and include wardrobes and bay windows where applicable.

PAUL STREET EC2A

Approximate Gross Internal Area
44.41 m² / 478.02 sq^{ft}

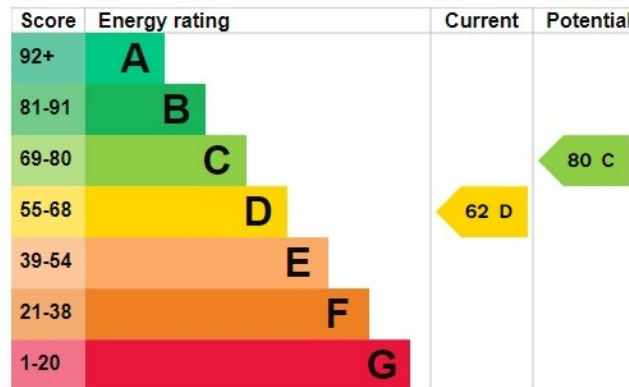


THIRD FLOOR

EPC GRAPH

Illustrations are for identification purposes only and are not to scale.
All measurements are a maximum and include wardrobes and bay windows where applicable.

[See how to improve this property's energy efficiency.](#)



The graph shows this property's current and potential energy rating.

Properties get a rating from A (best) to G (worst) and a score. The better the rating and score, the lower your energy bills are likely to be.

For properties in England and Wales:

- the average energy rating is D
- the average energy score is 60

Disclaimer: The information displayed about this property comprises a property advertisement. 99home.co.uk (/) will not make no warranty for the accuracy or completeness of the advertisement or any linked or associated information, and 99home has no control over the content. This property advertisement does not constitute property particulars, the property may offer to tenants in same condition as they have seen on time of the viewing. The information is provided and maintained by 99home.co.uk (/)

Company registration number in England : 10469887 VAT: 263 3023 36
Copyright © 99Home Limited 2017. All rights reserved.