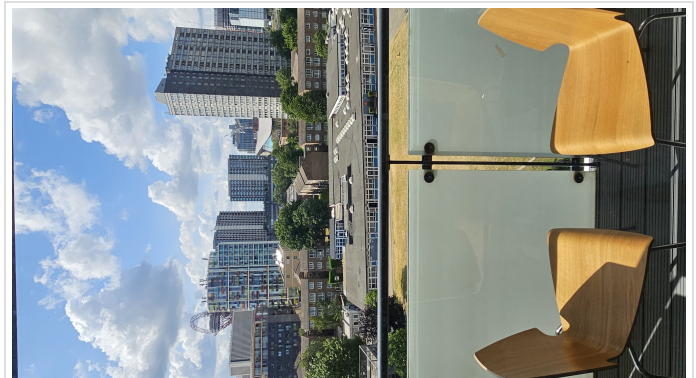
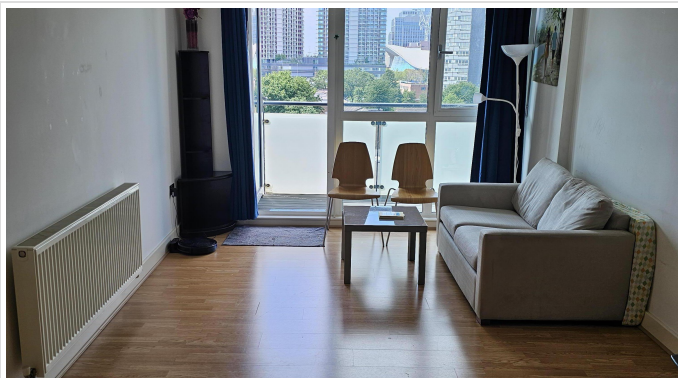


2 Bed Apartment In High Street Stratford , London, E15 2FD

£2,150 Monthly





## **SHORT DESCRIPTION**

---

Property Ref: 11861 FURNISHED WITH SECURED PARKING at prestigious 180 development. 2 Bedroom modern flat at superb location with own secured parking space, 24 hours concierge, gym, balcony with spectacular views of Olympic Park, International Quarter, Westfield shopping centre etc. Excellent transport links to City, Central London, Canary Wharf, including 24/7 buses to central London from just opposite the building. Furnished 2 bedroom modern apartment with private and reserved secured car parking space within the building. Secured cycle parking. 24/7 Concierge with large reception area with parcel storage and pick-up. CCTV cameras throughout the building. Olympic Park, Westfields mall, Stratford station, International Quarter (FCA, TFL offices etc.) are less than 10 minutes walking distance. World class sports facilities (Olympic stadium for Athletics, Aquatic centre for swimming, Velodrome for cycling, Copper box arena, Lee Valley Tennis and hockey centre etc.) are within walking distance. With parklands, waterways, playgrounds, theatres and cafes there is so much to explore in Stratford. Flat is within catchment for outstanding schools. Mossbourne, Chobam, School 21, Bobby moore Academy and Carpenters primary school are within close proximity. Stratford is buzzing, vibrant and bustling neighborhood. The apartment is just a short walk away from Westfield Mall, one of the largest shopping centres in Europe, boasting an impressive array of designer shops, restaurants, pubs and cinema. Entry to this great property is via a secure entry phone system. The apartment consists of a large open plan kitchen/lounge dining area which leads to a private balcony with spectacular views of Olympic park, Aquatic centre, International quarter, Westfields shopping centre etc. Great views from all rooms with ample natural light coming in. Apartment is in very good condition and almost brand new. Built in wardrobes and three storage rooms..



**Bed Room(s)**



**Bath Room(s)**

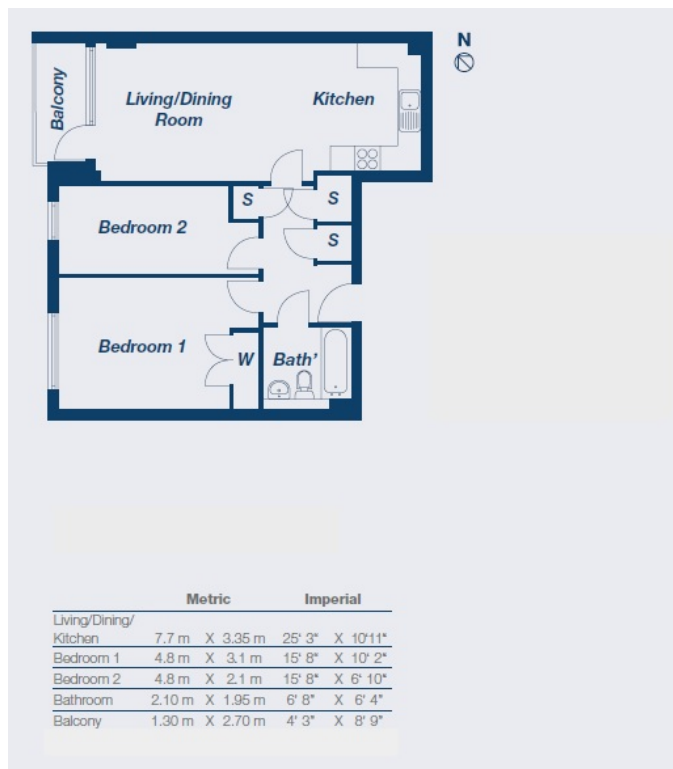


**Living Room(s)**

## **FLOOR PLAN**

---

Illustrations are for identification purposes only and are not to scale.  
All measurements are a maximum and include wardrobes and bay windows where applicable.



## EPC GRAPH

Illustrations are for identification purposes only and are not to scale.  
All measurements are a maximum and include wardrobes and bay windows where applicable.

**Disclaimer:** The information displayed about this property comprises a property advertisement. 99home.co.uk (/) will not make no warranty for the accuracy or completeness of the advertisement or any linked or associated information, and 99home has no control over the content. This property advertisement does not constitute property particulars, the property may offer to tenants in same condition as they have seen on time of the viewing. The information is provided and maintained by 99home.co.uk (/)

Company registration number in England : 10469887 VAT: 263 3023 36  
Copyright © 99Home Limited 2017. All rights reserved.