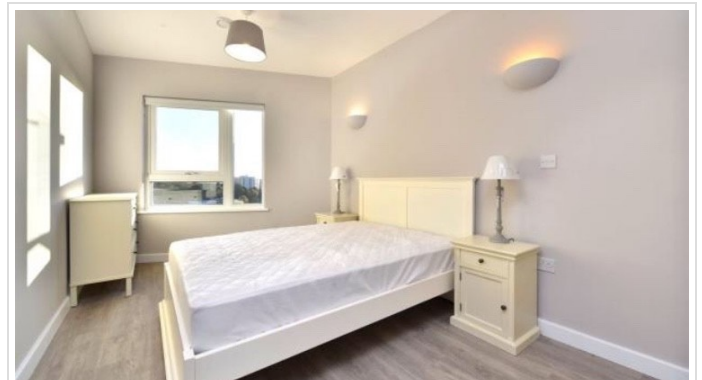
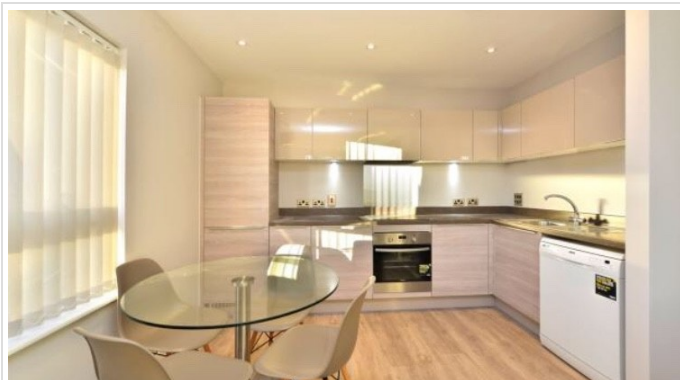
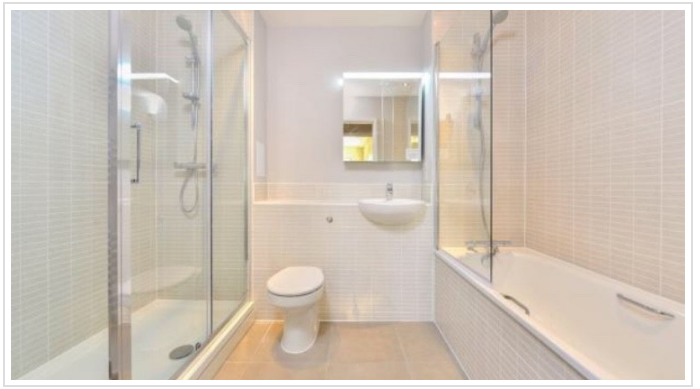
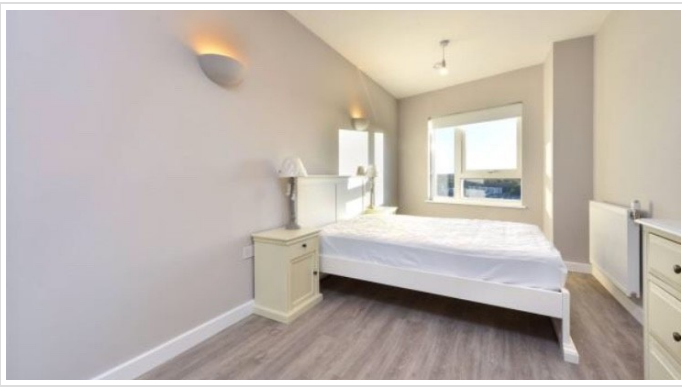


2 Bed Flat In 2 Wandle Road , Croydon, CR0 1FJ

£1,800 Monthly





## SHORT DESCRIPTION

Property Ref: 10809 This two double bedroom apartment is located on the 11th floor of the development located within walking distance of East Croydon station, this 'secure by design' development is ideal for commuters. Size: 724 sq ft The apartment benefits from the following: \* Two double bedrooms with fitted mirrored wardrobe in the master bedroom Furnishings include 2 large standing wooden wardrobes, 2 large drawers, 4 bedside cabinets, 1 dressing table, a large 4 seater sofa bed (with storage space), glass dining table with 4 chairs, balcony table with 2 chairs, washing machine, dishwasher, fridge freezer, 1 large standing lamp, 2-bed side lamps. \* Access to a private balcony & the roof terrace \* Open plan living/kitchen area with integrated appliances (full-size fridge/freezer, oven/hob, and extractor) \* Freestanding dishwasher and washer/dryer \* Family bathroom with shower over bath as well as bathtub \* Communal roof terrace and a private balcony \* Utility cupboard/ storage space \* Secure video entry phone system \* Fire sprinklers throughout \* Fob-controlled access systems \* Access to 3 communal terraces \* Outstanding contemporary interior specification \* CCTV in the communal areas \* Located on the 11th floor \* Accessible by 2 lifts and stairs \* Concierge service \* Secure bicycle storage \* Click and collect lockers \* EPC rating B Viewings from 10th July 2024



**Bed Room(s)**



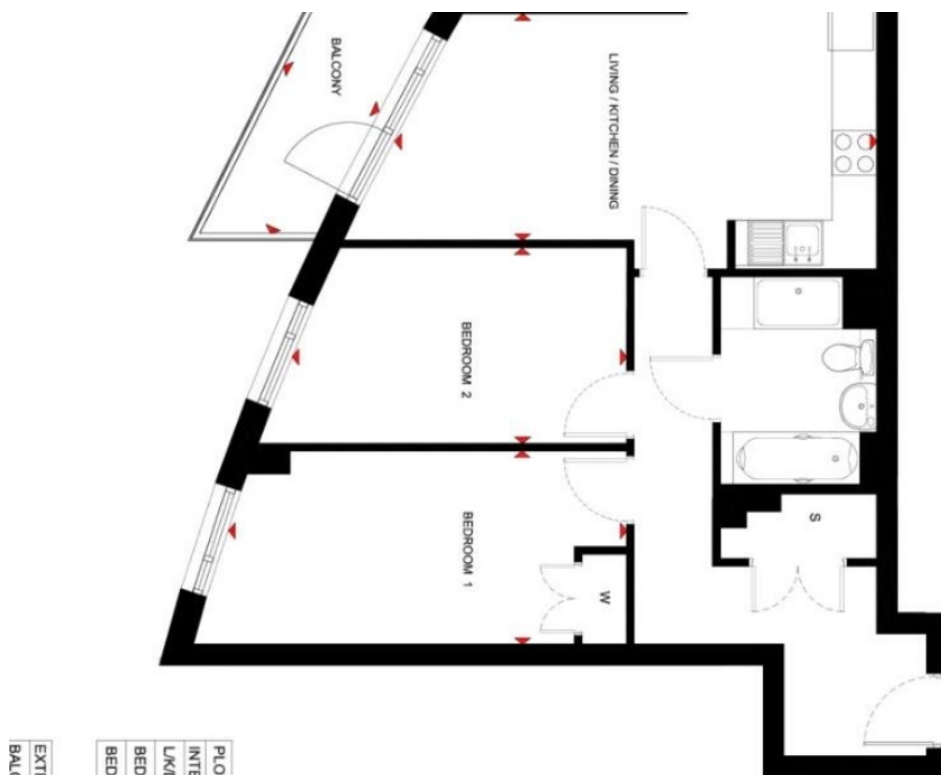
**Bath Room(s)**



**Living Room(s)**

## FLOOR PLAN

Illustrations are for identification purposes only and are not to scale.  
All measurements are a maximum and include wardrobes and bay windows where applicable.



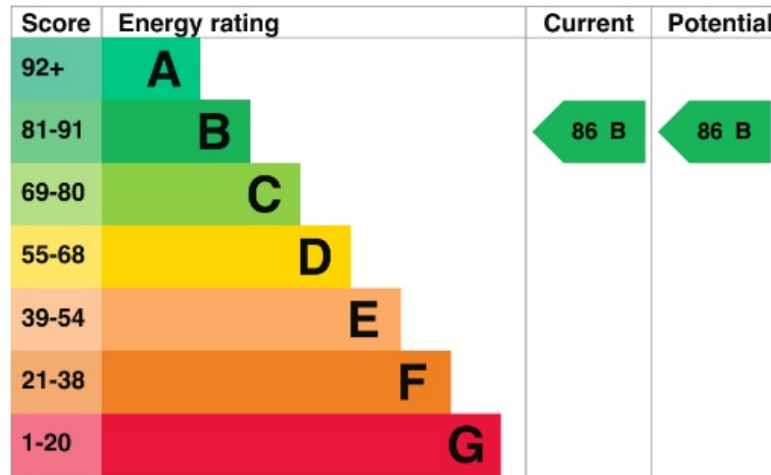
# EPC GRAPH

Illustrations are for identification purposes only and are not to scale.  
All measurements are a maximum and include wardrobes and bay windows where applicable.

## Energy rating and score

This property's current energy rating is B. It has the potential to be B.

[See how to improve this property's energy efficiency.](#)



The graph shows this property's current and potential energy rating.

---

**Disclaimer:** The information displayed about this property comprises a property advertisement. 99home.co.uk (/) will not make no warranty for the accuracy or completeness of the advertisement or any linked or associated information, and 99home has no control over the content. This property advertisement does not constitute property particulars, the property may offer to tenants in same condition as they have seen on time of the viewing. The information is provided and maintained by 99home.co.uk (/)

---

Company registration number in England : 10469887 VAT: 263 3023 36  
Copyright © 99Home Limited 2017. All rights reserved.