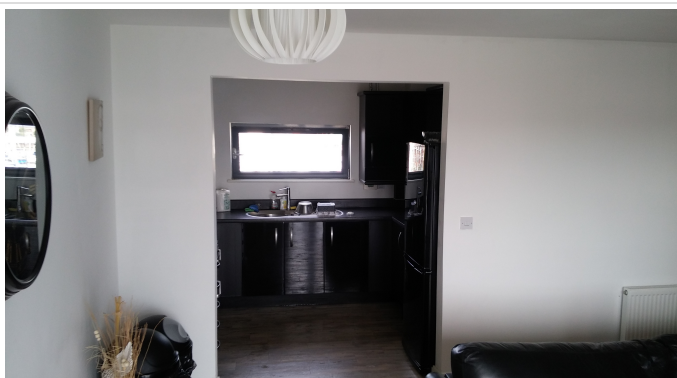
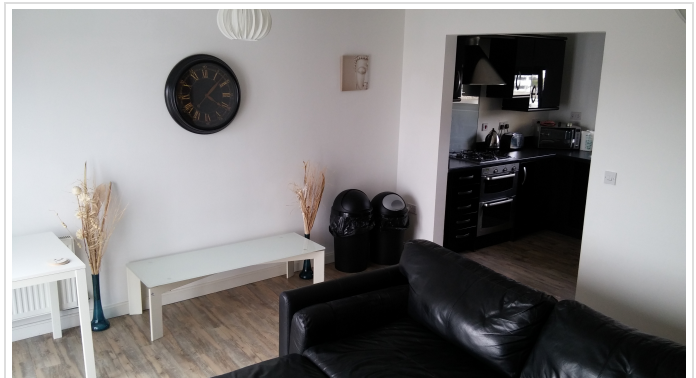


---

2 Bed Apartment In St Stephens Court , Maritime Quarter, Swansea, SA1 1SG  
£1,000 Monthly



# SHORT DESCRIPTION

Property Ref: 10091 Council Tax:E Please read the full advert and reply with the answers below, it will save me asking you on the first email Available April 25th onwards although earlier may be possible with negotiation with current tenants. One of the best properties in Swansea Marina. Not available often. Fully furnished to a high standard. Move in and enjoy life. Fixed specs - all day sun south facing double width balcony. 2 bathrooms, one main with bath, one en-suite with shower. Elevated 3m high bedroom ceilings. Beautiful views over the marina from back bedrooms, and balcony on master bedroom. Furnishings - large high-quality sofa. 49" TV, 2x double beds with Ikea mattress/mattress with mattress toppers, double wardrobes, microwave, fridge freezer, washer dryer, plates, utensils and glassware. table/desk with chairs to work. With your enquiry its very helpful if you provide the following information; - Length of contract required - Job status of each application - Earnings ---- For full time workers, please only state what you can evidence. ---- For students, only UK guarantors are accepted with proof of earnings... For any applicants who cannot prove income, a tenancy can be arranged providing you can pay the full contract amount and deposit upfront. Applicants who can do this will be given priority and will not be required to conduct referencing, which is my preference..... .

2

Bed Room(s)

2

Bath Room(s)

1

Living Room(s)

## FLOOR PLAN

Illustrations are for identification purposes only and are not to scale.  
All measurements are a maximum and include wardrobes and bay windows where applicable.

## EPC GRAPH

Illustrations are for identification purposes only and are not to scale.  
All measurements are a maximum and include wardrobes and bay windows where applicable.

Score	Energy rating	Current	Potential
92+	A		
81-91	B		
69-80	C	79   c	79   c
55-68	D		
39-54	E		
21-38	F		
1-20	G		

**Disclaimer:** The information displayed about this property comprises a property advertisement. 99home.co.uk (/) will not make no warranty for the accuracy or completeness of the advertisement or any linked or associated information, and 99home has no control over the content. This property advertisement does not constitute property particulars, the property may offer to tenants in same condition as they have seen on time of the viewing. The information is provided and maintained by 99home.co.uk (/)

